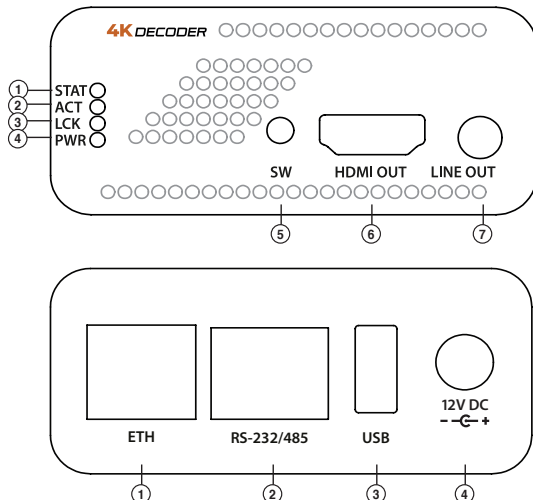


Follow the instructions in this guide in order to quickly prepare your XVC-ULTRA Decoder for operation.

NOTE: For additional information refer to the XVC-ULTRA Decoder User's Guide.

Product overview



FRONT

- ① STAT – Status LED
- ② ACT – Streaming activity LED
- ③ LCK – Steam lock indicator LED
- ④ PWR – Power LED indicator
- ⑤ SW – General switch
- ⑥ HDMI OUT - HDMI v2.0 video output
- ⑦ LINE OUT - Analog audio output (unbalanced, genlocked)

REAR

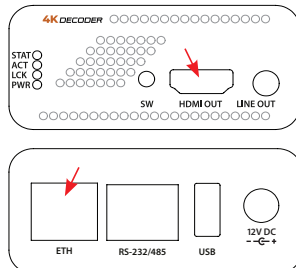
- ① Ethernet port
- ② RS-232/RS-485 port
- ③ USB – USB 2.0/3.0 host port
- ④ 12VDC - Input voltage

Check kit contents

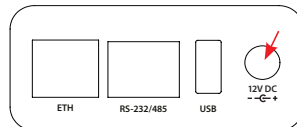
- ▶ XVC-Ultra Decoder
- ▶ Power supply
- ▶ Four rubber feet pads
- ▶ Warranty + EULA

Power & connect

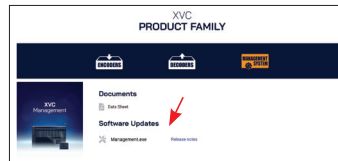
- 1 Connect the video sink to the Decoder (optional).
- 2 Connect the host PC to the ETH port using a LAN cable - either directly, or via a network switch.



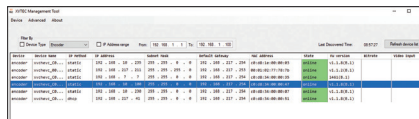
- 3 Power on the system by connecting the power supply to the input power connector (Note, the power supply is provided with a locking connector).



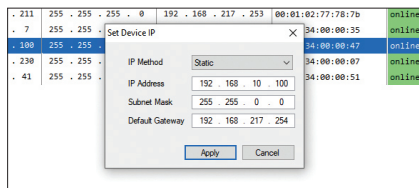
- 4 Download and install the XVTEC management tool from:
<https://www.xvtec.com/support/downloads> on a Windows-based OS.



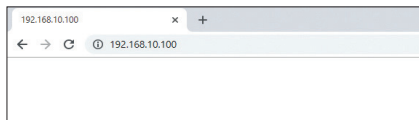
- 5 Execute the XVTEC Management Tool. The application discovers the devices in your network, and displays them as a list. You may need to disable Windows Firewall to enable discovery.



- 6 Find the row in the table associated with your Decoder. Right-click on the row, and select "Set IP". The Set Device IP dialog box appears. Select "Static" or "DHCP" IP configuration. If "Static" is selected, enter the Decoder's IP Address, Subnet Mask, and Default Gateway settings. Click Apply to save the new settings.



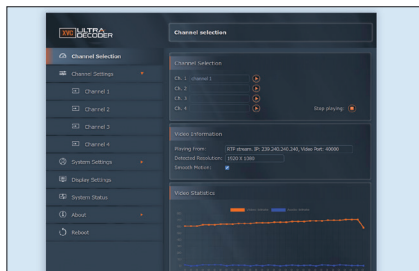
- 7 To access and configure the XVC-ULTRA Decoder using the web-based user interface, enter the IP address of the Decoder unit in the address bar of the browser.



- 8 Sign in by entering your user name and password in the dialog box displayed by your browser. A sample dialog box appears in the figure below. The default credentials are:
Username: admin
Password: admin



- 9 The main page of the Configuration System appears in the browser window.



- 10 Refer to the user guide for the next steps. Download the user guide from:
https://xvtec.com/wp-content/downloads/XVC_Ultra_HDMI_Decoder/XVC-ULTRA-User-Guide.pdf